

TORALIN®

PROFESSIONAL DPF CLEANING MACHINE



EN | APPLICATION MANUAL..... 4

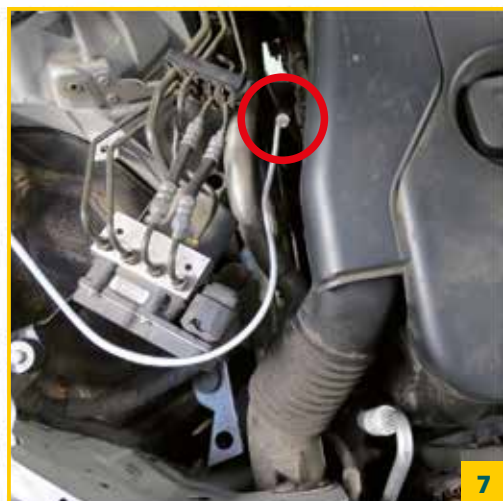
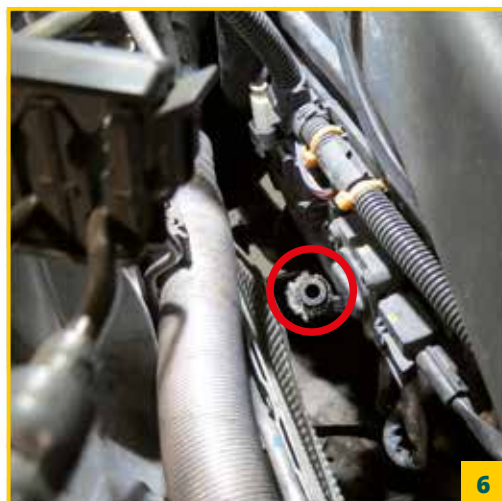
DE | ANLEITUNG 5

ES | INSTRUCCIONES DE USO..... 6

FR | MODE D'EMPLOI..... 7

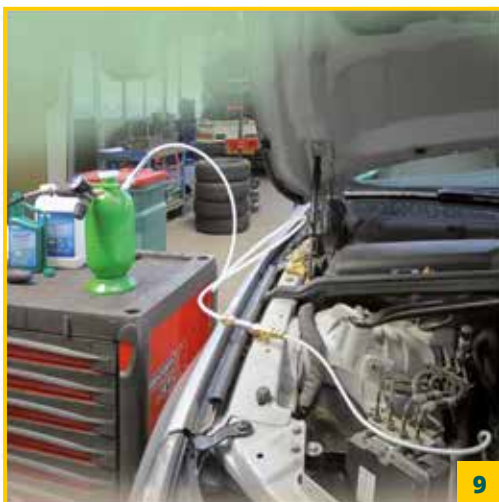
IT | MANUALE D'USO 8

NL | HANDLEIDING 9

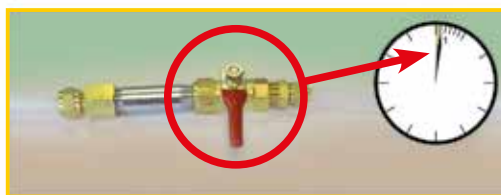




8



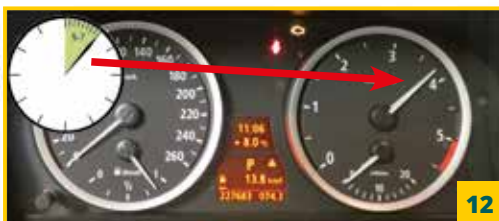
9



10



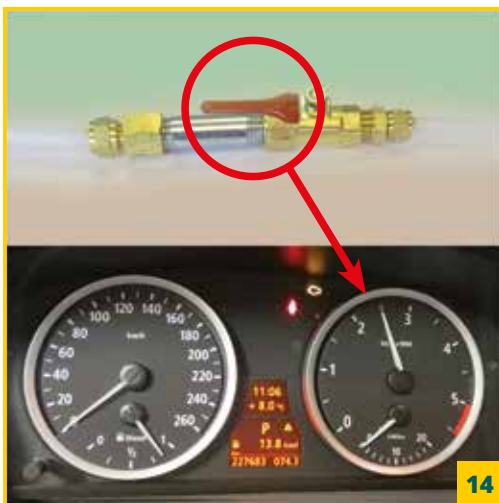
11



12



13



14

EN TORALIN® PROFESSIONAL PARTICULATE FILTER CLEANING MACHINE

Cleaning particulate filter. No Filter Disassembly Required!

Nowadays many modern diesel-powered vehicles have a built-in particulate filter. With the passing of time, soot particles build up for various reasons, which gradually leads to a clogged filter and hampered regeneration. TORALIN offers garage owners a special, innovative method for cleaning the clogged particulate filter without disassembling.

HOW IT WORKS:

The TORALIN® Diesel Particulate Filter Cleaner is directly sprayed into the particulate filter via the pressure sensor and with help of the TORALIN Professional Particulate Filter Cleaning Machine. This loosens up all soot, ash and residue particles or any other contaminants caught by the particulate filter and then easily removes them. The flushing liquid also ensures that all the ash is removed.

DIRECTIONS:

General description

1 – TORALIN® Professional Particulate Filter Cleaning Machine

2 – Transparent supply hose

3 – Valve

4 – Connecting coupling for transparent supply hose

5 – Filling aperture

6 – Coupler for high-pressure compressor

WARNING: The TORALIN® Particulate Filter Cleaner and Particulate Filter Flushing Liquid are water-based products. It is strictly prohibited to fill these cleaners into to fuel tank or motor oil tank.

- Step 1:** Start the engine and let it work till the engine is warm.
- Step 2:** Use the transparent supply hose **2** with valve **3** to connect with a cleaning machine.
- Step 3:** First make sure the valve **3** is closed. (Fig. 3)
- Step 4:** Now connect the supply hose **2** to the connecting coupling **4** of the machine. (Fig. 4)
- Step 5:** Add the contents of the "TORALIN Particulate Filter Cleaner" bottle (500 ml) to the tank of the machine via the filler opening **5** and put the tank cap back on (Fig. 5). Do NOT use any other chemicals in this machine.
- Step 6:** Stop the engine when it has reached the desired temperature.
- Step 7:** Search for the front pressure sensor and release it. (Fig. 6)
- Step 8:** Connect the supply hose **2** of the TORALIN Cleaning Machine to the front exhaust sensor hose. (Fig. 7)
- Step 9:** Connect the machine to the high-pressure compressor via the coupler **6**. Set the pressure at 2 bar. (Fig. 8)
- Step 10:** Open the valve **3** to the supply hose **2**. The TORALIN Diesel Particulate Filter Cleaner now transfers from the machine into the particulate filter. This is visible in the transparent hose. (Fig. 9)
- Step 11:** After 1 minute, close the valve **3** again and allow the cleaner to soak in for 4-5 minutes. The Cleaner softens the carbon particles and contaminants in the diesel particulate filter. Repeat step 10 2-3 times until all of the cleaner is finished (Fig. 10). Now leave the cleaner to do its work for another 15 minutes.
- Step 12:** Disconnect the air hose. Close the valve **3** of the supply hose **2**. (Fig. 11)
- Step 13:** Put the pressure sensor back into position.
- Step 14:** Start the engine and let it run at 3000-4000 revs for 5-7 minutes (Fig. 12). During the first few minutes the car should smoke considerably. Should this not be the case then an extra cleaner may be required.
- Step 15:** Turn off the engine, release the pressure sensor again and reconnect the machine's supply hose **2**.
- Step 16:** Add the contents of the bottle "TORALIN Particulate Filter Flush" (2 liters) to the tank of the TORALIN Cleaning machine via the filler opening **5** and put back the tank **1** cap. (Fig. 13)
- Step 17:** Start the engine and let it run up to 2000 rpm.
- Step 18:** Put a collection tray underneath the exhaust to catch the liquid/foam.
- Step 19:** Reconnect the air hose and then reopen valve **3** on supply hose **2**. Let the engine run up to 2000 rpm and depress the accelerator pedal fully 2 or 3 times every minute. Continue this process until the entire Particulate Filter Flush liquid is finished. (Fig. 14)
- Step 20:** Stop the engine. Disconnect the supply hose **2** and reconnect the front exhaust sensor hose.
- Step 21:** Start the engine and let it idle for 5 minutes. Then drive the car for 10 minutes at high revs. The treatment is now finished. Possible error codes need to be reset.
- Step 22:** Drain the collection tray with fluid with waste oil.

TORALIN®

www.toralin.com

www.toralin.de

www.toralin.es

www.toralin.fr

www.toralin.it

www.toralin.nl